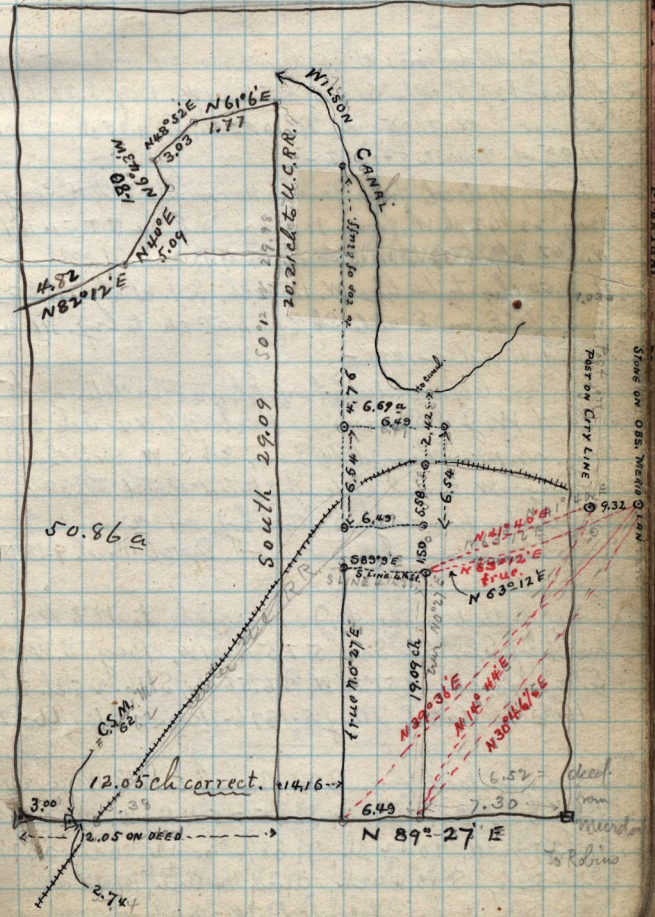


sq. S.W. cor. - 7 23.31 ch. E, 12.23 ch. S 23.90 W 12.23 ch to log 29°

✓ S.W. 1/4 Sec 30 - T6 N R 1 W,

March 7 - 1888 -

Gov. Murdock Patent



page  
89

is 1.03 ch W. from 1/4 Sec. line City Post on W. Corp. limits near U.C.R.R.